

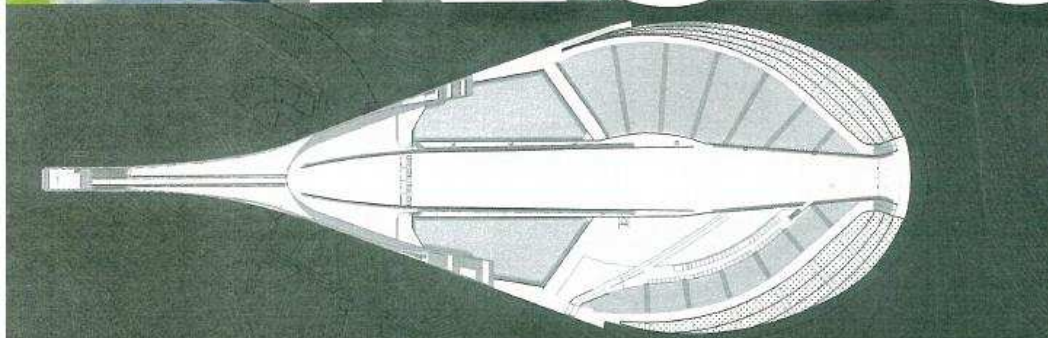
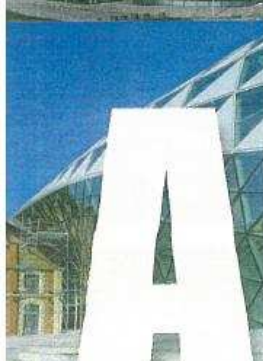
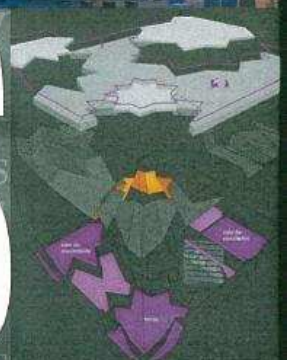


ATLAS

OF WORLD

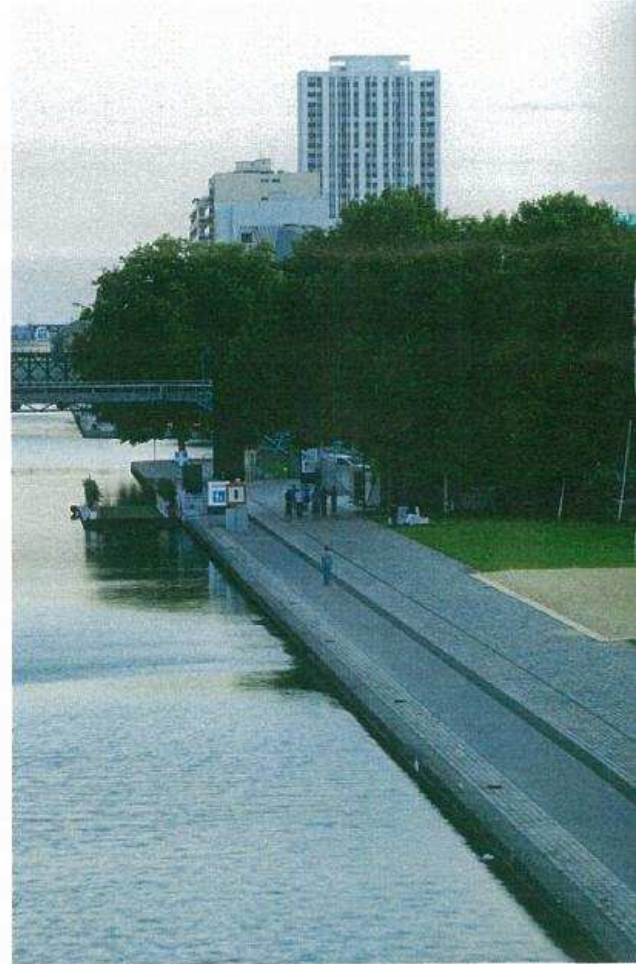
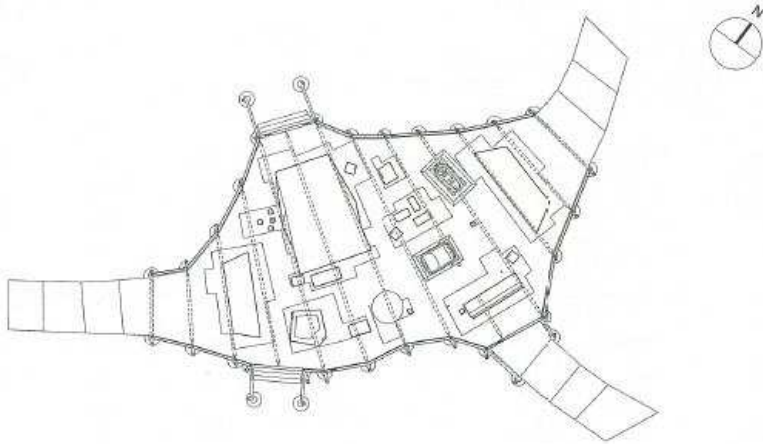
ARCHI

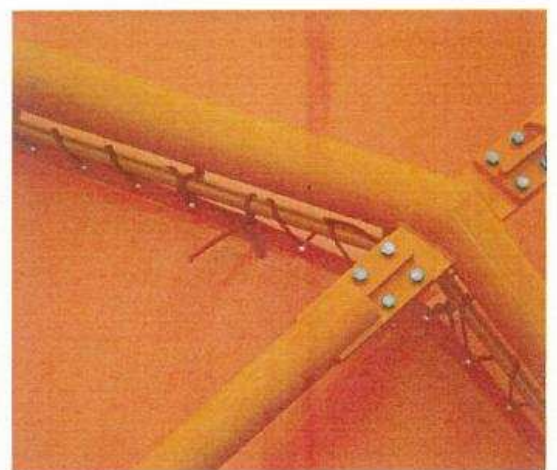
TECTURE



La Ville Intelligente

In front of La Geode, Paris, an ephemeral structure has been designed by the architects Jakob + MacFarlane. Conceived for the hellodomain exposition, the structure presents the technologies which will support the cities of tomorrow. Visitors are encouraged to enter and project themselves into a welcoming city that interacts with its inhabitants via new media, communications and movements. La Ville Intelligente was conceived as a future Paris or structure into which arteries are connected to a metropolis of the future, entering and exiting into a new space where people can rediscover peripheries, streets and places.





Les Grandes Tables de l'Île

Les Grandes Tables de l'Île is an architectural hybridization between an agricultural greenhouse, a barge and a timber-frame house, located on an island in the Seine in Paris. Comprised of scaffolding and shipping containers, the scaffolding frame envelopes a large strand board box, which houses the restaurant. Visitors are guided up to the restaurant by a wide flight of stairs, while the space beneath is reserved for events and parties. The transparency of the structure allows it to shine out like a beacon at night, illuminating the area beneath.

